

solvotrack

A generic first-level support and administration tool for distributed systems

1/2

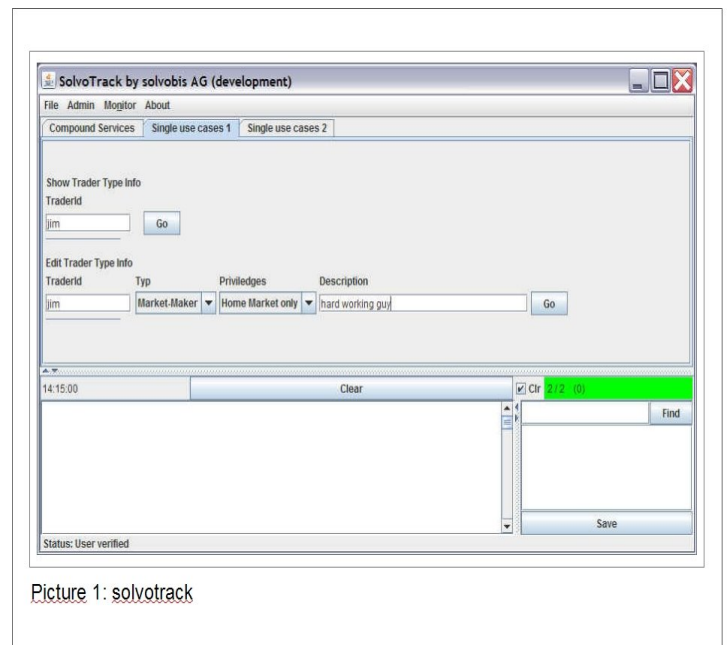
Short description

In contrast to most configuration tools that very often are scheduled and run primarily once for installation and basic configuration purpose, solvotrack is a tool for predefined use cases that are triggered from time to time ad hoc by human beings.

This is a tool for first level support, application configuration teams and operation desks.

Domain

- Complex distributed environment and confused about too many programs and nodes in your infrastructure?
 - Hide all behind a GUI by simply configuring the use cases, services and parameters.
 - Dispatch every request to one or several preconfigured servers and process them in scripts.
- Discussions with IT-revision?
 - Log all activities and changes in your system.
- Need of remote access but your user is restricted by his rights?
 - Configure the distribution of requests to one or several nodes.
 - Work with user-roles for controlling the access and hide all host names and passwords from the users.
- Quick information about your system required?
 - Returniere the output of remotely started programs to the user's GUI (Console, HTML, Browser).
- No GUI for the management of your external provider's software or no resources to develop a GUI for distributed administration tasks?
 - Return the output of remotely started programs to the solvotrack GUI. Describe your parameters and let your batch files being called from the solvotrack GUI.



Picture 1: solvotrack

Benefits

- guided changes in a distributed software environment
- reduced operating risk by restricting access to well defined use cases and avoid typing mistakes
- possibility to log all the changes performed in a distributed software environment
- increased operational speed of daily changes performed by first level support team
- automatic documentation of know-how about configuration

Solvotrack

Typical jobs

- remote configuration of text-files (search & replace words, insert or append lines, etc)
- remote setting of registry keys (and avoid typing mistakes!)
- reading of a remote eventlog
- calling a Perl-program remotely to update a database
- remotely start or stop a program on a server
- Graphical output (HTML) can be rendered within the solvotrack GUI or can be forwarded to your local browser.
- etc.

Architecture

On login of a user in the GUI the Server-Pool-Server offers all accessible use cases through the Client-Pool-Server to the user.

The Client-Pool-Server receives the user's requests from the GUIs and passes them – eventually over a firewall, which is not shown in the picture – to the Server-Pool-Server .

When the user submits the request for his use case in the GUI it is routed to all required solvotrack servers.

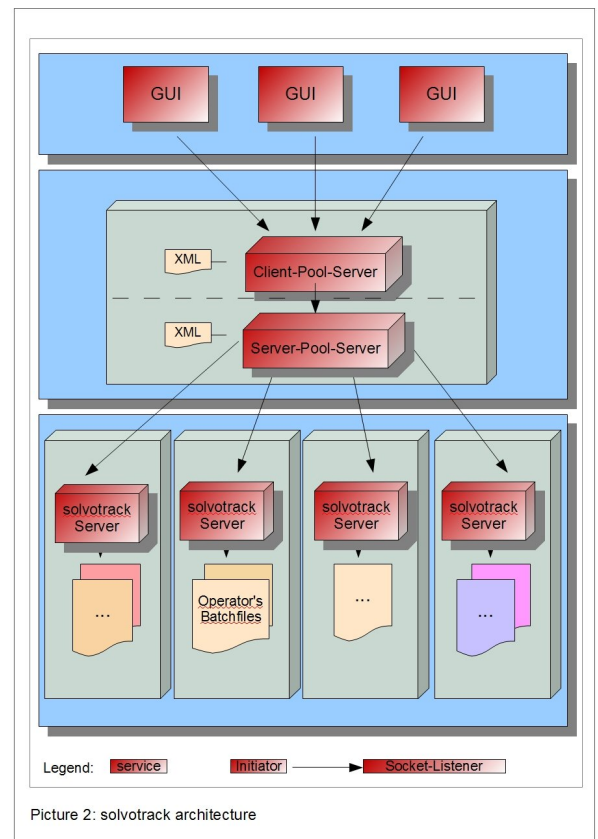
On the servers the parameters are resolved and batch scripts, other programs or java callbacks are called.

The use cases, parameters and scripts are configured in a file based repository. The GUI helps to distribute the repository to the servers in case of new use cases.

The software is written in Java, but for Microsoft environments the programs are distributed as executables for all Windows operating systems. They can run as services.

This software has an asynchronous architecture. It processes every request and response without waiting for other messages.

This contrasts to a standard Web-Server approach.



In order to get more information please contact us.